

## Tennyson Road Wimbledon, SW19 8SH

£830,000 Freehold



A beautifully presented three bedroom, two bathroom terraced Victorian family home with a south facing garden, offered to the market with no onward chain and located in the ever popular 'Poets' area of Wimbledon.

Blending traditional character and charm with a modern contemporary finish, comprising a front reception leading out onto an open-plan kitchen/diner with wooden flooring and range cooker. Bi-fold doors open out onto a sunny southerly aspect private garden. Upstairs includes a well-appointed double bedroom, modern family bathroom and study/single bedroom, with another double bedroom and en-suite shower room in the converted loft.

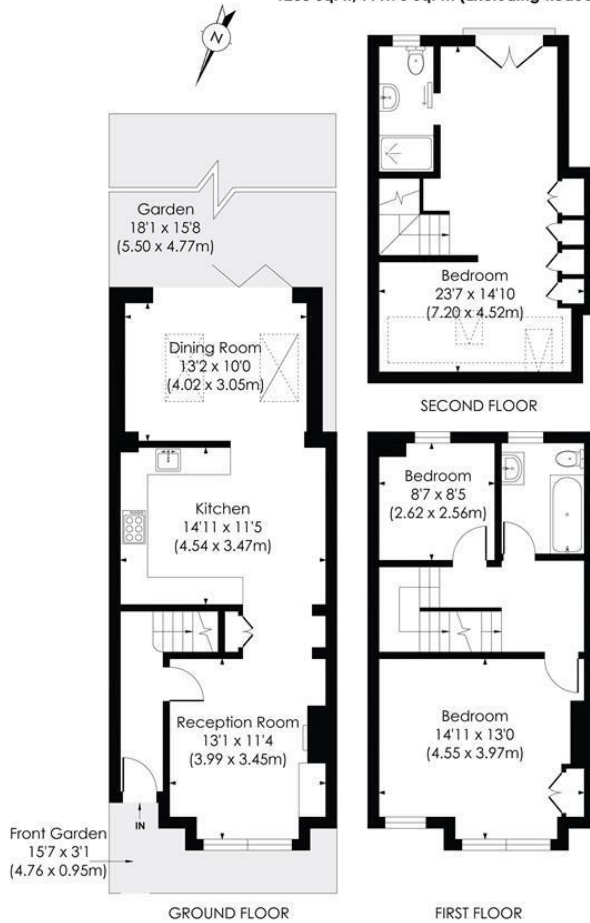
Located on a quiet, residential road in the desirable 'Poets' area of Wimbledon this property is excellently located for a range of transport links, including Wimbledon Town (Mainline and District Line), South Wimbledon (Northern Line) and Haydons Road (Thameslink), as well as a number of desirable Primary Schools. Viewings are highly recommended.

**TENNYSON ROAD, SW19**

Approx. Gross Internal Floor Area

**1273 Sq. ft/118.26 Sq. m (Including Reduced Height)**

**1203 Sq. ft/111.76 Sq. m (Excluding Reduced Height)**

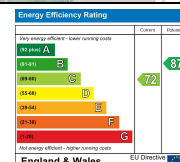
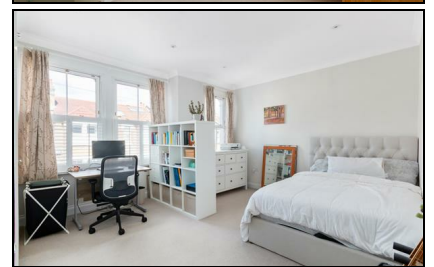


© Pixangle Property Marketing Ltd. info@pixangle.com Tel: 0208 870 2118

**pixangle**  
PROPERTY MARKETING

This floor plan has been prepared for the purpose of illustration only in accordance with the latest RICS code of measuring practice and is not to scale. All measurements and areas are approximate and whilst every effort has been made to ensure the accuracy of the plan contained here, no responsibility is taken for any error, omission or misstatement.

- Terraced Period Family House
- Three Bedrooms
- Two Bathrooms
- South Facing Garden
- Located in the "Poets" Area of Wimbledon
- Close to Multiple Transport Links and Desirable Schools
- No Onward Chain
- Freehold
- EPC Rating - C
- Merton Council Tax Band - E



**For Free Mortgage Quote and Best Mortgage Rates, call an Ellisons Mortgage Advisor on 020 8944 9494**



Although these particulars are believed to be correct, their accuracy is not guaranteed and they do not form part of any contract.

**Celebrating 30 years of successful Sales and Lettings in Merton**

